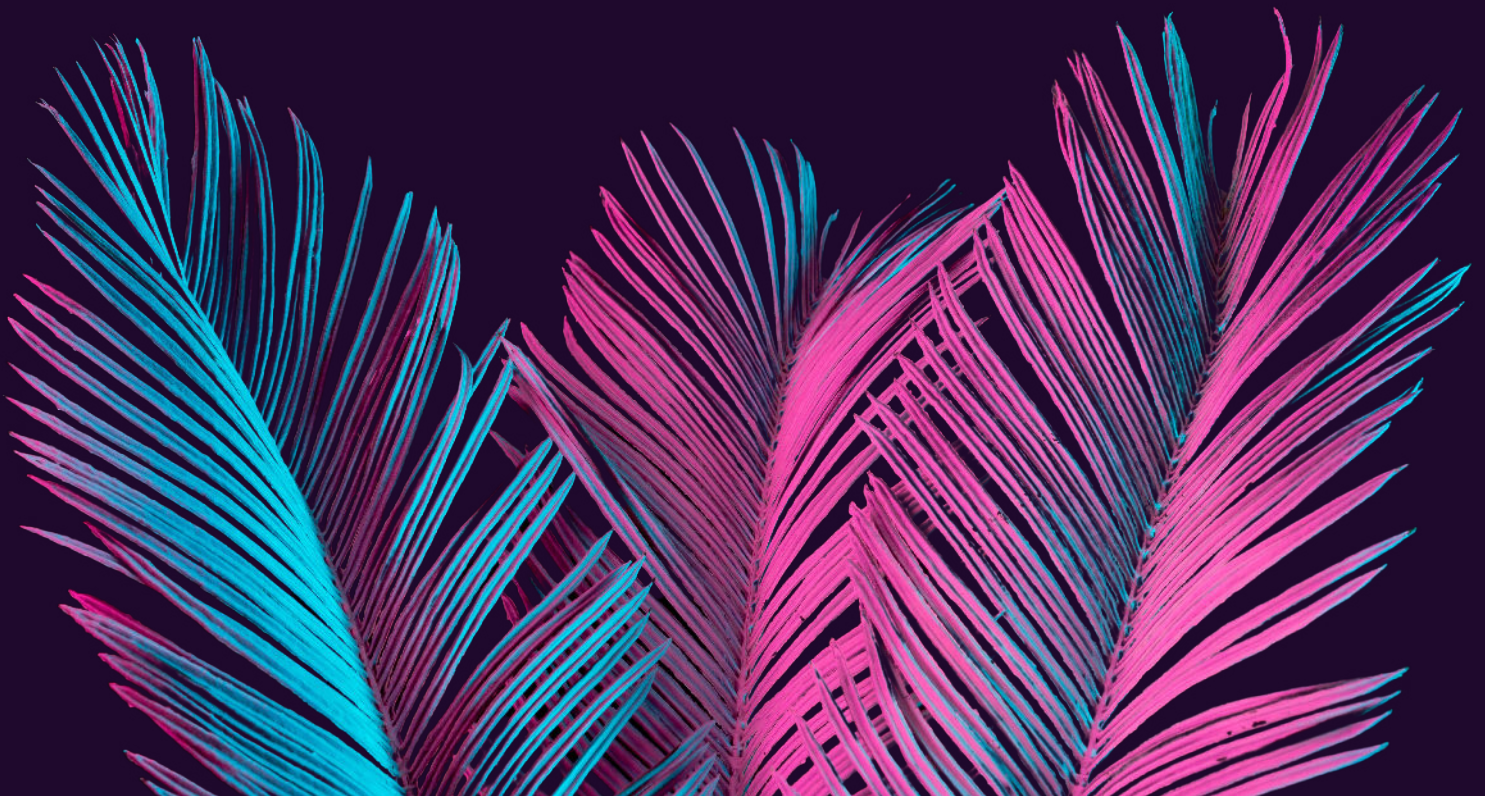




**WUJI**  
GAMES



# CONTENT

01

**Introduction: The way of the future DAO**

02

**WUJI Primary Principals**

03

**WUJI Environmental Benefits**

04

**Natural Capital Accounting Tree Metrics  
Wuji Proof of CHI & Tree Verification**

05

**Wuji Games Feature Game - Earth  
Defenders**

06

**WUJI Tokenomics, RoadMap & History**

07

**NFT Land Sale & Phase Two Financial  
Tools**

08

**WUJI ECO - Rewards for businesses and  
merchants**

09

**WUJI Media & Marketing, Gamification,  
Events**

10

**WUJI Team**

11

**WUJI Advisors**

12

**WUJI Partnerships**

13

**CONCLUSION: INTO THE FUTURE WE CREATE**

14

**DISCLAIMER**

15

**References**

# INTRO

## WUJI GAMES REGENERATIVE DAO ECONOMY

Wuji is the first Regenerative Gaming Rewards Engine & NFT Metaverse. Wuji Games is a portion of all in-game sales of NFTs (i.e. Skins, Tools, Characters, Weapons, Land and in-game level ups) will go towards planting trees, while NFTs representing the trees get minted. Our platform and Game Engine will track the regenerative actions such as trees being planted, and then use the Natural Capital Accounting principle to generate rewards from the improvement of living ecosystems, creating a new Green Standard where regenerating the earth is the new incentive.

After each tree gets planted it will be uploaded to an NFT blockchain platform, creating a new Protocol- Proof-of-CHI. The CHI is a protocol where a record is created and stored using an ERC1155 NFT Token and Polygon- Ethereum's Internet of Blockchains, These records can be used to track carbon sequestration, oxygen production, soil regeneration, water purification, creation of biodiversity, storm surge protection, rain water generated, cooling of the planet, food, medicine, building materials, community health & happiness improvements, and all the ecosystems restoration actions that shall take place.

For **Phase One** Wuji's Gaming Engine will start with its first Game, Earth Defenders. Earth Defender players will learn real permaculture skills including how to plant trees, fruits, vegetables, plants, build homes, collect & stores water and even produce energy. Our goal is to get our game STEM Accredited and get in into school programs.

Wuji has partnered with Games Interactive - Siegeworlds.com - Armah Labs - LightningWorks.io for our Gaming Team & Rewards Engine. Wuji has also partnered with ArtCommunity.io to generate on monthly digital NFT art events and challenges for special skins, tools, weapons, plants, equipment and other in-game articles. We will be onboarding other regenerative games into the engine to enable them to issue a wallet, passport and use our tracking dashboard & rewards system for their community of gamers.

**Phase Two** will be an option for nonprofits, businesses and influencers to use the Wuji protocol as a marketing loyalty rewards system, using an affiliate link similar to Uber/Airbnb. Sharing regenerative games will earn each individual and organizations additional rewards which will create a network effect.

**Phase Three** will be an open source platform that can be used as a plug-and-play system for game developers to create new adventures, challenges and games within the network and create a community around Regenerative Games. Wuji will also host periodic Regenathons for developers and enterprises to participate in utilizing and expanding different aspects of gamification for micro-contributions into local regenerative actions.

**Phase Four** is creating new finance tools such as a Tree Planting app similar to the RobinHood app, or a Tree Planting Bond or Tree Pension Funds. We also plan to use a credit card rewards point system that plants trees with every purchase made. Our goal is to make it easy and rewarding for everyone to contribute to regenerating the Earth.



# Wuji Primary principals

- Gaming and Rewards SaaS platform for making regenerative actions passive and simple
- Post-Extraction Economies, Shared Economies, Economies for Wealth and Well-Being for all
- Utilize Natural Capital Accounting Principles and Practices to create regenerative economies
- Natural capital is a critical asset, especially for developing countries where it makes up a significant share (36%) of total wealth.
- Voting & Staking Rights for players who purchase Wuji's DAO Token
- Blockchain towards humanitarian goals & efforts, and UN SDGs
- Impact tracking platform for all regenerative actions
- Token only generated when a contribution is made. i.e. when tree is planted
- Ownership and Transparency of members' data



# WUJI ENVIRONMENTAL BENEFITS

Wuji will be giving incentives towards all regenerative earth practices and humanitarian efforts put forth by the United Nations' Sustainable Development Goals.

Wuji is starting with trees because they help blanket-solve many of the SDG's



- Trees combat climate change by sequestering excess carbon dioxide (CO<sub>2</sub>) in our atmosphere that contribute to climate change.
- Trees clean the air by absorbing odors and pollutant gases (nitrogen oxides, ammonia, sulfur dioxide and ozone)
- Trees provide oxygen: in one year a tree can provide enough oxygen for 18 people
- Trees save water and help prevent water pollution
- Trees help prevent soil erosion on hillsides and waterways
- Trees can help save energy and cool cities (trees planted in strategic areas can reduce air conditioning costs by 50%)
- Trees can create food and provide economic opportunities for communities
- Trees can heal by providing medicines and studies show medical patients with a view of trees heal faster and with less complications

# Natural Capital Accounting

Natural Capital Accounting is an accounting principle & system that puts an economic value on improving living ecosystems. Wuji is using this accounting system to plant trees, track them and issue rewards based on ecosystem improvements such as carbon sequestered, oxygen produced, biodiversity created, water purified, storm surge protection, rain created, cooling of the planet, food, medicine and building materials.

Wuji has partnered with a network of scientists and researchers putting these value metrics on the blockchain to create our own form of value based on the improvements to this good earth. Wuji will use the viability of Natural Capital Accounting that has been studied for over twenty years by the United Nations, World Bank, SEEA.org, Wavespartnership.org, The Capitals Coalition, Stanford University and many more Universities and organizations, to redefine value and transform decision making, while generating rewards for members who contribute to planting trees through our tree planting partners ("TPP").

## Wuji Proof of CHI & Tree Verification & Additional Value Metrics

### A. Tracking and Monitoring the forests:

- Tracking trees being planted per Hectare of land with Edenprojects.org
- Satellite identification Systems that can monitor hectares of forest from space.
- Peer to Peer verification
- Verification from reputable tree planting partners (TPP).

### B. Building out and teaching members identity management:

- With tree identity management, we can build out reputation systems for decentralized tree planting verification, while creating rewards for verifying forests being planted. Think of "Pokemon Go" for the Forests!

### C. Introducing different types of technologies that can be imported in our system:

- Drones, Climate data, Sensors, AI imagery, IOT: these can all be of immense value to the Scientific Community

# Wuji Games Feature Game

## EARTH DEFENDERS

Earth Defenders is an online metaverse where players learn permaculture and earth positive actions and tactics. Player will learn how to plant trees, crops, flowers, herbs and how to manage their soil, collect & store water and to compost.

Earth Defenders is doing our first NFT Earth Drop for 9,999 pieces of Earth Inside Earth Defenders and the initial sale is for 500 NFT Islands. Each piece of land will be randomly generated and there will be various sizes and characteristics. We will continue to do monthly launches of unique NFTs that for characters, tools, weapons, animals, plants, land and more.

Earth Defenders Impact:

The other unique component to Earth Defenders is for every NFT purchased and in game transactions that happens a portion will go towards a real positive earth actions like planting mangrove trees. Players will also receive NFTs for each tree that get s planted and can utilize them inside Earth Defenders for various purchases, level ups, bonus packs, and even stake to their farmland

Come be an Earth Defender and Play for the Planet





# Wuji Token Supply

The Initial token total supply of Wuji Governance tokens is 333,333,333.

Players can use Wuji tokens to vote on future projects & initiatives and also use them to level up their characters, improve their farms, get new tools & weapons, build houses, access new worlds and games, and more.

Capital Distribution: as a start, 1/3 of every contribution or sale will go towards planting trees that will also be minted as Wuji NFT Tokens, belonging to the contributor/buyer.

## Capital Intake Split

- Tree Planting Partner receives 30% = \$.30 of every dollar for tree planting.
- Give.Nation receives 3% of NFT Purchase for global education initiatives
- Wuji Regenerative DAO/Treasury 6% = \$.06 of every transaction towards Regenerative Actions
- Wuji receives 60% = \$.60 of every dollar for administrative, legal, marketing and reward programs, game & tech development, events & regenathons, etc.

## Wuji DAO Token

Wuji's Governance token that can be used for voting on future regenerative initiatives, game strategy and development, abundance distribution and community protocols. The total supply will be 333,333,333 and the initial launch price of each token shall be \$.09 dollars (9 cents).

- Wuji Private Sale (10%) - 33,333,333
- Wuji Future Public Sales (20%) 66,666,666 will be released over three years quarterly
- Wuji Ambassador, Affiliates, Partners and Marketing Program (20%) - 66,666,666
- Wuji Liquidity Pool (10%) - 33,333,333
- Wuji Gaming Development (10%) 33,333,333
- Wuji Blockchain & Tech Development (10%) - 33,333,333
- The Founding Wuji Team, Advisors, (20%) - 66,666,666 of the token supply.





# RoadMap

1. Initial Introduction to Blockchain and Natural Capital Accounting in 2015
2. Co Hosted SDG & Blockchain Hackathon at The World Economic Forum in Jan, 2018
3. Co Hosted a SDG Gamification Hackathon Chicago Blockchain Project 2018
4. Developing international partnerships in tracking impact and blockchain 2015 - present.
5. Developed Relationship with Diviproject.io - Top 150 blockchain - Tech/Media
6. Formed Gaming Partnership with GamesInteractive.co.uk 2020 for Metaverse
7. Presented and Attended at Comic Con, Dubai World Expo, Dubai Gitex, Glasgow COP26, NYC.NFT, Art Basel Miami, Puerto Rico Blockchain Week Coin Agenda.
8. Sell Earth Defenders NFT's for Land/Islands, characters, weapons, tools, equipment, plants, animals , seeds December 2021
9. Launch Beta Version of Earth Defenders Q1 2022
10. Wuji Initial Game Offering - IGO - Q1 2022
11. In Game Green E-commerce for physical goods "G-Commerce"
12. Wujifi - Staking Tree NFTS to your land for Regenerative Project Pool
13. Corporate reward system, Tree API plugin and tracking dashboard
14. DAO for Voting & Governance on key initiatives and project advancements
15. Carbon Impact tracing & reward dashboard
16. Micro-investments into future agriculture projects - Kelp/Hemp/Agro Forestry/Local Regen Agriculture Projects
17. Release Future finance tools for automatic tree planting and NFT minting protocols

# WUJI History

## Articles/Podcasts

<https://blockleaders.io/2018/10/01/stephen-cutter-dream-chaser/>

<https://medium.com/@afhenderson/blockchain-for-social-good-4e6dod4468d3>

<https://www.youtube.com/watch?v=Ow59YDwTD3g&t=88s>

<https://hackernoon.com/green-ride-sharing-with-stephen-cutter-of-wuji-5a9506400277>

<https://cryptocoin.news/analysis/interviews/money-doesnt-grow-on-trees-but-maybe-crypto-does-14564/>

<https://networkcapital.co/2018/02/06/the-life-of-wuji/>

## Speaking Engagements:

<https://www.meetup.com/Blockchain-for-Social-Good-Chicago/events/251408260/>

<https://www.glappitnova.com/>

<https://medium.com/@afhenderson/blockchain-for-social-good-4e6dod4468d3>

## Wuji Past Blockchain & Gaming Hackathons

<https://www.absolutesum.co/chicago>

## Earth Defenders Initial NFT Island & Earth Drop & Sales

In order to Play Earth Defenders you will need to buy one of the 9,999 randomly generated pieces of land that will be up for sale this December, 2021. Players will also be able to purchase additional items such as skins, tools, weapons, animals, housing, energy, level ups, new levels, in-game NFT digital art, access to new games and worlds, and more.



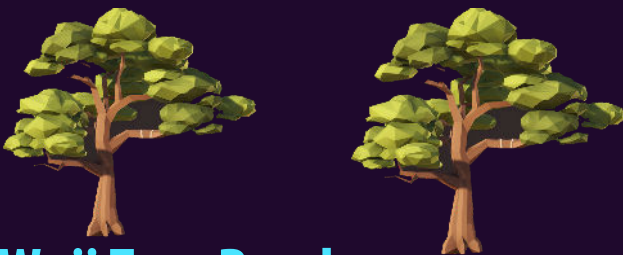
# Wuji Phase 2 Financial Tools

## Wuji Micro Agro Investing

Agroforestry: Micro-Invest into food production and get paid back from the harvest

Hemp Micro Futures: Invest into hemp production and get paid back from the harvest and CO<sub>2</sub> Sequestration.

We will also pair up local CSA food delivery programs for players to directly invest into and get food sent to them weekly, bi monthly or monthly.



## Wuji Tree Bonds

The bonds allow corporations to pre purchase both lots of trees to be planted and also the carbon credits generated. For example Microsoft can purchase 100,000 trees to be planted in the Amazon Jungle, generating 100,000 carbon credits over 40 years. Microsoft then will be recognized in-game as having purchased a lot in the virtual world - virtual Amazon Jungle for planting 100,000 trees.

## Wujifi - DeFi Tree Bank

Wuji also feels the ability to stake your trees in our DeFi model is ideal for a liquidity pool. Players can stake their trees for 6 months 1yr, 3yr, 5yr, 10yr and 20yr. Investing into nature for the long term plans similar to a pension fund for the health of the planet.

Wuji will assist in selling the Carbon Credits/Tokens that are staked to the the WUJIFI Liquidity pool via Regen.Network or Lykke.com. Wuji will also have the ability to stake tokens for Agroforestry and food programs. Meaning the initial investment will go towards planting fruiting trees and players will receive rewards for actual food production that results.

## Earth Exchange

The **Earth Bank** and the **Basel Bank** which is owned by the **Earth Dollar Group** are willing to provide the exchange of Wuji Tokens into USD, Euro, Bitcoin, Ethers etc., as well as provide the players and partners with Debit & Credit Cards and mobile payments to easily convert Wuji Tokens into other spendable currencies at point of sales. (i.e. grocery stores, coffee shops, restaurants) We also have commitment partnerships with **Peywey.io** and **JoinSeeds.com** for additional exchange communities.

# Wuji Phase 2 Financial Tools

## Wuji Pension Fund

Wuji will create a future fund, aka “Pension + WUJIFI Liquidity Pool”

Individuals can stake their trees over time for their own retirement plans.

Pension fund - contributors can start a tree fund for long term holds - "Proof of Stake”

We can have a five year, ten year, twenty year plan, etc.



## Wuji tracking impact rewards

Tracking & Measuring Rewards with our regenerative partners- the more our regenerative partners track, the more tokens they can earn. Wuji will have different color and types of badges for the regenerative action taken place and tracked:

- Wuji Tree (Green Coin)
- Earth (Brown)
- Water (Blue)
- Air (White)
- Biodiversity (Yellow)
- Community Impact (Purple)





## Wuji Eco - Rewards & Tools

Wuji will also have the ability for players to protect both their in-game forest and be connected to protecting real forests through RainforestTrust.org. This can be directly related to the players in-game world and can expand their game world to new adventures.

## Wuji Rewards for Leveling Up & Green NFT badges

Players will receive higher ranks for planting more trees and will have special skins & other NFTs available to them, in addition to matched token rewards from corporate sponsors. Rewards for certain benchmarks will be in the form of giveaways, tournaments, Rare NFT badges, NFT Hunts

## Wuji Art

Wuji has a network of digital artists who can create special and rare utopic artworks. We want our artists to put their flair on what a greener and harmonious world can look like. We will both auction off the artworks and also have NFT's be rewarded as players unlock certain regnen benchmarks and ranks.

**Artcommunity.io** is a community of the top 25 artists from Puerto Rico and an online NFT Marketplace

## Wuji Learn

Play to Learn: the more you learn the more you plant & earn. rewards You can watch or partake in short earth-education videos and tutorials. The more you learn real earth positive skills the more you earn both in-game and in real life, via token rewards from corporate sponsors. With integrated search engine plugins like **Ecosia.org** & **Hulah.org**, each search goes towards protecting the rain forest with **RainforesTtrust.org**

## Wuji Giving Economy Startegy

Giving Economy: Wuji has partnered with **GiveNation.world** to help teach the players the power of giving, and the idea of "when you give, you receive".

Give Nation Teaches Children the power of giving, financial literacy and coding skills, and has built a full educational curriculum around giving, starting from k-18

# Wuji rewards for Businesses and Merchants

## Businesses

Wuji business members will receive Wuji Tokens similar to a credit card rewards program. Wuji has merchant processing agreements to have micro contributions from each transaction go towards planting trees and earning Wuji tokens that can be used in-store for goods or services. Wuji Members will receive Wuji Tokens which can be used with partnered businesses similar to travel points with a credit card only for impact driven businesses, i.e. renewable energy programs, local green and wellness businesses, B Corps, Impact businesses, eco retreats etc.



**Wuji Rewards Dashboard** is a platform for businesses that can benefit them in four ways: Regenerative Impact, Marketing, Rewards, and Tax Incentives

**First**, businesses can use our platform as a form of regenerative impact and marketing promotion to their customers and enhance their social and environmental impact.

**Second**, it can be used as a reward system, similar to credit card points. Members will earn Wuji Tokens for each purchase which can later be used to purchase more goods and services. This will create lasting consumers.

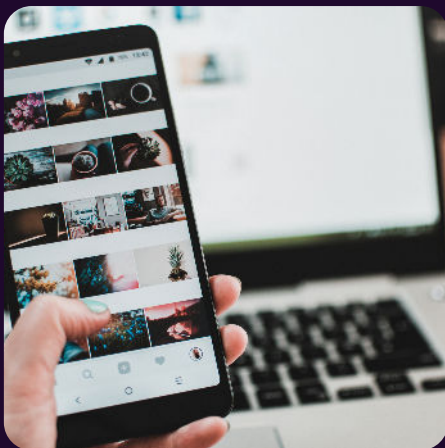
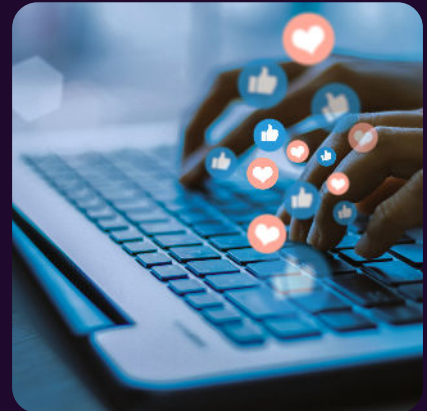
**Third**, it can be used as a tax write off for corporations as Wuji has a Non Profit Fiscal Sponsor

**Fourth**, Wuji will offer users/players the option to use their data for marketing to Green/Impact businesses and services. Wuji can utilize private or public data to educate the public on solutions that are a force of good. Wuji can monetize this data in an open source fashion and share the earnings/rewards.

# Wuji Media & Marketing

## Social Media

Wuji will also distribute rewards to our digital ambassador members for creating content, streaming and sharing their unique promo code or hashtags. An example would be sharing a random act of kindness, or environmental tasks by creating videos, photos, or creative content that expresses this genuine action. These can be shared on social media, blogs, vimeo etc.



## Green CRM,PR,Media

Over the years Wuji has built a substantial network in the green space and most love the idea of a Regenerative Educational Game called Earth Defenders. We will be included in email and social media campaigns and networks shall receive tokens as ambassadors.

## Peer to Peer

Peer to Peer sharing for Proof of Action and tip your fellow Earth Defenders players. This allows individuals to plant trees freely and receive rewards without the need of a middle man. Players can buy and ship goods independently, and Wuji will even have a network for people to post their goods and services for sale.



# Wuji Gamification & Events

## Gamification

Environmental Rewards/RDG Gamification Dashboard - Creates games that actually contribute to solving the SDG's & RDG's. This will engage members to continuously use the Wuji platform and track rewards that can be dispersed on the blockchain in the form of NCA and membership rewards for participation. For example, a tree planting simulator video game similar to SimCity, where players can build forests and get educated on the ecosystems they are building. Players can also take survey questions for science research for rewards or permissions to unlock levels and seeds, and more. We will have ad space for impactful businesses and other non profits.



## Regenathon

Wuji will host regular Regenathons on various issues we would like to solve. It could be for future game and tech development as well as game play, game theory and advancements in the game world. The Wuji Game Engine code will be open source for developers and artist to add new characters and games and will have a marketplace to sell them in.





# WUJI Team

## Stephen M. Cutter Jr. - Co-Founder - CVO

Stephen has been a lifelong entrepreneur who spends his time focusing on the world's biggest problems. Stephen has been focused on Regenerative Currency Design and how we can create a Regenerative Economy utilizing Natural Capital Accounting . He first came up with the concept of Regenerative Gaming over three years ago and is now ready to bring it to the world.

## Alan Laubsch - Co-Founder - Alan Laubsch

Alan is an internationally recognized thought-leader in risk management. As one of 25 founding members of the RiskMetrics Group (now part of MSCI), he authored Risk Management: A Practical Guide (1999) and published articles in the Asia Wall Street Journal and other financial media. Alan started his career as a researcher in JPMorgan's corporate risk management group in New York, after receiving a degree in Industrial Engineering at Stanford University in 1993. Research included hedge fund risk analysis, default risk modeling, economic capital allocation, and market and credit risk integration. As a Vice-President in JPMorgan's Risk Management Solutions group, Alan advised global financial institutions on enterprise risk management. Alan is inspired by evolutionary ecosystems, and his most recent publication is Adaptive Risk Management: Powered by Network Science. Alan's mission is to catalyze a global risk culture to protect the systems that sustain us.

Alan started the Natural Capital Markets group at Lykke Corp, and listed TREE, the world's first mangrove and carbon credit backed digital token.

## Joshua Armah - Tech Lead - Data Science

is a multi-talented data centric polymath who is a computational and data scientist, researcher dedicating his career to full time problem solving of both social & environmental challenges. Joshua Armah is a recognized global leader in Artificial Intelligence. He has a career spanning over 10 years in information technology with a focus on AI.

# WUJI Team

## Vishal Modha - Senior Advisor

Vishal is a prolific technologist. A senior tech lead and CTO from London, where he successfully coded and led teams to develop large-scale technology platforms for Unilever, Siemens, Department of Health, the Royal Bank of Scotland, Stage Coach, Bill Gates, Unity and many more.

In his recent time Vishal has diverted from just building technology towards city infrastructure, clean carbon negative energy, bamboo bicycles, modular artistic bio constructions, and gaining the skills and teams required to build out the ultimate regenerative sustainable smart city/village

## Jake O'Connor - CGO - Chief Gaming Officer

Jake is the CEO of Games Interactive Ltd and specialises in the development of online role-playing games within the cryptocurrency and NFT space. Games Interactive specialises in developing and creating Blockchain Games. Find your Massively Multiplayer online roleplaying adventure now!

## Miguel Vallejo - Chief Art Officer

Miguel is the CEO and founder of Artcommunity.io, a network of artists that develop NFT artwork and investment tools for other artists. Miguel is a visionary designer, technologist and is advanced in cryptocurrency trading. He also has unique AI and ML programs for optimal trading outcomes.

## Haley Findlay - Chief of Ecosystems and Partnerships

Haley Findlay creates innovation ecosystems that accelerate entrepreneurs and economies. Haley is an innovator, global speaker, earth investor, and holistic regeneration advisor for world-conscious brands, eco-entrepreneurs, family offices, and multilateral, multinational, and multidimensional organizations.

With a focus on people, planet, profit, Haley invests in big ideas solving for the world's biggest societal and environmental needs. Haley's coalition-based, private equity firm focuses on delivering solutions for smart, regenerative cities and connected communities. Haley's current focus is in Gaming, eSports tournaments, education, and skills development where she is solving for all 17 SDGs through impact initiatives.

# WUJI Team

## Greg Kerr - Chief Blockchain Officer

Greg is a systems thinker, currency designer, skunk works builder and pioneer in new incentive models to encourage positive earth actions. Greg has a history in peace strategies and intelligence and cooperation. Greg has been in the blockchain space for over four years and has studied extensively all the systems and applications blockchain holds.

## Thatcher Michelsen - Chief Marketing Officer

Thatcher has over 20 years of online marketing and ecommerce experience with a focus on green and regenerative products and brands. Thatcher is also an expert in Regenerative practices and hemp. Thatcher brings a wealth of knowledge in both spaces and has a passion unrivaled for the health of the planet.

## Charmaine Waldrop - Communications & Strategy

Charmaine has spent years in the sustainable development world and building impactful communities. She has built a vast network of global organizations and companies that are waiting to adopt Wuji's Regenerative protocols.

## Sam Barnes - Art & Philanthropy Director

Sam has a background and degree in environmental sciences from Columbia and is passionate about how Art can make new forms of wealth for artist and the Earth. Sam is also focused on how we can use decentralized finance for philanthropy

## Geoff McCabe

Geoff is a leader in the blockchain world, and has been interviewed on TV and radio on several occasions, including CheddarTV on the floor of the NY Stock Exchange, BoldTV, TechRepublic's podcast, and at NASDAQ with CNBC's Jon Najarian. He has been interviewed as a cryptocurrency visionary across a broad spectrum of media and quoted in dozens of articles, including in Hackernoon, Computer America, The Street, SmartBusinessHacks, B2B News Network, and BlockTribune

# WUJI Advisors

The WUJI Advisory Board will provide feedback and guidance to the WUJI Council in exchange for nominal amounts of Wuji tokens from the Wuji rewards pool.

## David Kam - Crypto Guru and founder of Earthdollar.org

David is a philanthropist and the inventor of the Earth Dollar. The Earth Dollar is a Natural Capital Asset Backed by indigenous tribes and countries. The Earth Dollar is an Open-Source Global Commons Method of Exchange designed to empower collaboration, respond to climate change, heal our planet, create prosperity, revitalize the world economies, and provide a universal basic income worldwide!

## Rieki Cardon - Founder of JoinSeeds - Regenerative Currency

Tokenomics, Decentralized Governance, Facilitation, Holding Space, Co-Creating through Inspiration. I audaciously committed to a vision of creating a healthier civilization and to do so through purposeful play. This led me to serve SEEDS a Regenerative Economy that's a regenerative and financially rewarding solution for many of humanity's systemic crises

## Rob Charles - Founder & CEO of Goldfingr - Partnerships

Goldfingr is the modern paradigm of social clubs - a think tank, incubator and socially conscious business accelerator. We use technology, events and brick and mortar social clubs to keep our members connected. We've integrated raising capital, investing, business, the arts, entertainment and social, adding unprecedented value to our members.

## Annie Goeke - Founder of Earth Rights Institute

Anne de la Bouillerie has 30 years of leadership and experience in planning, developing, and maintaining programs using sustainable, holistic approaches for social enterprises and community building worldwide. She is a current UN IU NGO delegate through Earth Rights Institute, (ERI) a non-profit she co-founded. ERI assists communities and local stakeholders to empower themselves, providing programs and education that promote, create, and teach economic sustainable development. ERI has developed a new program "Earth Rights Institute Climate Change Living Lab" a mobile immersion program to help accelerate communities to transition into green societies.

Her experience uniquely combines a wide breadth of knowledge about 'green' practices in the marketplace and the implementation process for sustainable development. She has developed an unmatched and local communities range of contacts and relationships with stakeholders worldwide who work on global sustainable development.



# WUJI GAMES REGENERATIVE DAO PARTNERS

Wuji Games is working with the following blockchain organizations:

*Diviproject.org Earthdollar.org ArtCommunity.io JoinSeeds.Earth Regen.Network  
goldfingr.io Siegeworlds.com Lightningworks.io Gamesinteractive.co.uk  
Earthpulse.io Give.Nation Wiase.Foundation*

Wuji has been building an international tree planting network and has identified our Trusted Tree Planting Partners for our reforestation initiatives:

*EdenProjects.org TreesSisters.org Tree-Nation.com*

Players' and Organizations' contributions to Wuji will plant trees and then earn rewards in the form of an NFT that represents these NCA environmental benefits. Wuji will also be able to provide tree planting organizations this protocol and tool as a plugin to give rewards to their tree planting donors. We also will be adding business partnerships for our loyalty rewards program.



# Wuji Partnerships

Major benefit of partnering with Wuji is our platform is a plug and play system to plant trees and earn rewards for its consumers and members.

- **JoinSeeds.com** - Regen digital currency for a movement for movements, providing tools, systems and support for all of us to co-create a thriving world
- **EathDollar.org** - The Earth Dollar is a currency based on Love which carries the highest, purest intentions for Mother Earth and all life that dwells on her
- **DiviProject.org** - Divi's mission is to accelerate the adoption of digital currency to make life better. We make crypto fun and easy.
- **GamesInteractive.co.uk** - Games Interactive is a multiplayer world where plates can hold cryptocurrencies to represent their characters, weapons and in game purchases.
- **Wiase.foundation** - Data Science Research experts for a regenerative and ethical future
- **goldfingr.io** - International network of Entrepreneurs, Investors, Artist, Technologist and Pioneers
- **Philanthropayments.com** - Merchant Processing for Good, micro transactions towards tree planting.
- **GiveNation.world** - teaches children the power of giving (five million kids)
- **Earthpulse.io** - GenBlue's mission is to empower the regenerative economy. We support Eco Heroes who are protecting vital ecosystems with exponential technologies. Protect what you love. Have fun. Build real wealth.
- **Credyts.com** - Micro Future for Regenerative Agriculture
- **EdenProjects.org** - Planting 38 million mangroves in Madagascar in 2018.
- **TreeSisters.org** - Empowers Women to plant trees across the globe
- **Regen.Network** - Regenerative Tracking protocols for tree planting and forest protection



# CONCLUSION: INTO THE FUTURE WE CREATE

The core motivating principle of Wuji is to give people incentives to take care of the earth and to share resources abundantly.

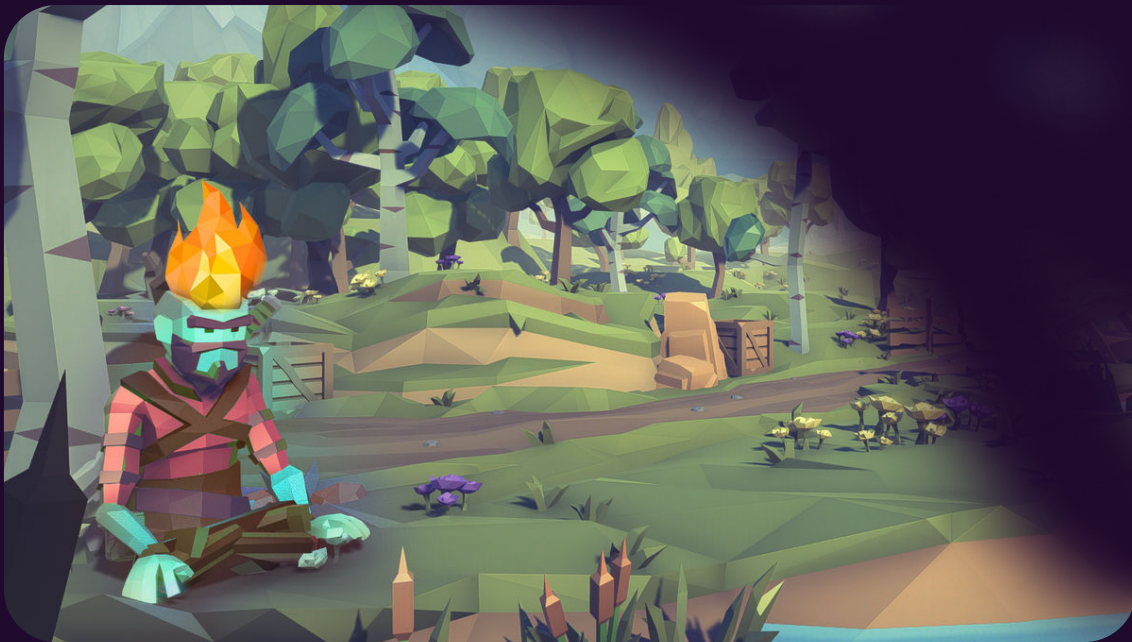
Nikola Tesla quotes: “If you want to find the secrets of the universe, think in terms of energy, frequency and vibration”.

Wuji is transforming the energy we put into nature into the true form of value: we put very little energy into planting trees but they provide a lifetime of value. Imagine a world of abundance for all simply by regenerating the earth.

This is not just a platform app that we are building. It is a community of free individuals who are connecting, transacting, and living exclusively through voluntary, peaceful, sustainable interactions.

What can be possible when we coordinate our best efforts to build a new economy — and a new society — that works for everyone?

Let's find out together!



# DISCLAIMER

This document is for informational purposes only and does not constitute an offer or solicitation to sell shares or securities in Wuji or any related or associated company. Any such offer or solicitation will be made only by means of a confidential offering memorandum and in accordance with the terms of all applicable securities and other laws. None of the information or analyses presented are intended to form the basis for any investment decision, and no specific recommendations are intended. Accordingly this document does not constitute investment advice or counsel or solicitation for investment in any security. This document does not constitute or form part of, and should not be construed as, any offer for sale or subscription of, or any invitation to offer to buy or subscribe for, any securities, nor should it or any part of it form the basis of, or be relied on in any connection with, any contract or commitment whatsoever. Wuji expressly disclaims any and all responsibility for any direct or consequential loss or damage of any kind whatsoever arising directly or indirectly from: (i) reliance on any information contained in this document, (ii) any error, omission or inaccuracy in any such information or (iii) any action resulting therefrom.

## Scaling Plans

1. Have TPP's simply use the digital platform and track the trees they are currently planting
2. Web browser that allows people to search the forests they are planting I.E. google earth
3. Accountability and transparency and trust - verification
4. Have TPP's been able to upload previously planted trees on the Platform
5. Robin APP for tree planting







**WUJI**  
GAMES

**WujiGames.com**

**Stephen M. Cutter Jr.**

**815-274-6777**

**Stephen@WujiGames.com**